

Aluminum as a Reference Element for the Elucidation of Pb Enrichment /Depletion in Selected Arable Soils of Nigeria.

Uduma, A. U., Jimoh, W.L.O.

Department of Pure and Industrial Chemistry, Bayero University, Kano, Nigeria.

Department of Pure and Industrial Chemistry, Bayero University, Kano, NIGERIA

Abstract: - Lead (Pb) concentration was assessed of the arable soils in the vicinity of mining and dumping sites in Nigeria. Its contents in the arable soils assayed by means of atomic absorption spectrophotometry, (AAS) ranged from 6.8 – 47.8 mg/kg. The enrichment factor (EF) calculated by using Aluminum as a reference element fell within a range of 8.3 – 83.9. The mean values of the enrichment factor of 30.8 classified the soil as very highly contaminated with lead. Anthropogenic activities contribute highly to the level of lead in the studied areas. This poses serious debilitating effects on the agro – ecosystems, since lead has no known essential functions in plants metabolism.

Keywords: - *Zamfara, Arable soils, anthropogenic activities, lead, enrichment, depletion, Enrichment Factor.*

Introduction

This research was informed by the Zamfara state (one of the studied areas) incessant acute lead poisoning epidemic. A series of lead poisoning in Zamfara State, Northwest Nigeria, led to the deaths of at least 163 people between March and June, 2010, including 111 children, under the age of five years. Since the lead poisoning crisis was reported, it has been estimated that at least 10,000 people of which 2,000 children under 5 years of age are in acute danger of death [1]

The efficiency of lead absorption from the gastrointestinal track is greater in children than in adults; and nutritional deficiencies of iron or calcium, which are prevalent in children may facilitate lead absorption and exacerbate the toxic effects of lead [2]. Lead is a cumulative general poison, infants, children up to 5 years of age, the fetus and pregnant women being the most susceptible to adverse health effects. Its effects on the central nervous system can be particularly serious[3]

Research on young primates has demonstrated that exposure to lead results in significant behavioral and cognitive deficits, examples, impairment of activity, attention, adaptability, learning ability and memory, as well as increased distractibility [4].

An annual immunization program in Zamfara state, led to the discovery of a high number of childhood mortality and morbidity in Yargalma and Daretta villages, where lead is prevalent. It was thought by the villagers that all the children had contracted malaria. An investigation by Medecins Sans Frontie (MSF), (Doctors without Borders), WHO and CDC (USA, Canada and Nigeria), found unusually high levels of lead in the children's blood during tests. Studies have shown a strong positive correlation between Blood – Lead (PbB) levels in humans [5,6]. The UNEP conducted field research within the home environment of the local miners in September and October, 2010, and found that some well water in the villages contained 10 times the recommended limit of lead, the soil had as much as 150 times the limit of lead and air samples contained as much as 500 times the acceptable limits [5].

There is increase and domestication of mining activities which is the mainstay of the local economy, in many villages in Zamfara State within the last years, with greater involvement of women and children processing lead contaminated gold ore in their home environment, including the use of cooking utensils for mining activities. Mining activities have potentially impacted negatively on public health, environmental safety and sustainable agriculture in Zamfara State. Indeed, Zamfara state is known for being the site of the worst lead poisoning outbreak in modern history, which is an ongoing crisis[5]. Acute lead toxicity renders the soil unsuitable for plant growth and destroys the biodiversity [7] This study therefore, is aimed at the assessment of lead enrichment and depletion of the arable soils in the agro ecosystem of these areas. This is so because, healthy soil is essential for human health because what is in the soil affects the health, safety and quality of the food we eat that is derived from the soil [8].

Lead is the commonest of the heavy elements, accounting for 13mg/kg of the earth's crust. Industrialization, urbanization, mining, dumping and many other anthropogenic activities have resulted in the redistribution of lead from the earth's crust to the soil and to the environment [9]. Soils with lead levels above 10ppm average are primarily the results of lead contamination [10].

Lead forms various complexes with soil components, and only a small fraction of the lead present as these complexes in the soil solution are phyto available [11]. Despite its lack of essential function in plants, lead is absorbed by them mainly through the roots from soils solution and thereby may enter the human food chain [12]. The absorption of lead by roots occurs via the apoplastic pathway or through Ca^{2+} permeable channels [11]. The behavior of lead in soil and uptake by plants is controlled by its speciation and by the soil pH, soil particle size, cation-exchange capacity, root surface area, root exudation and degree of mycorrhizal transpiration [13]. After uptake, lead primarily accumulates in root cells, because of the blockage by casparian strips within the endodermis. Lead is also trapped by the negative charges that exist on roots cell walls [12]. Excessive lead accumulation in plant tissue impairs various morphological, physiological and biochemical functions in plants, either directly or indirectly, and induces a range of deleterious effects. It causes phytotoxicity by changing cell membrane permeability, by reacting with active groups of different enzymes involved in plant metabolism and by reacting with the phosphate groups of ADP or ATP and by replacing essential ions[12].

Lead toxicity causes inhibition of ATP production, lipid peroxidation and DNA damage by over production of Reactive Oxygen Species (ROS). In addition, lead strongly inhibits seed germination, root elongation, seedling development, plant growth, transpiration, Chlorophyll production and water and protein content [13]. The negative impact of lead on plant vegetative growth mainly result from the following factors: distortion of Chloroplast ultrastructure, obstructed electron transport, inhibition of Calvin cycle enzymes, impaired uptake of essential elements such as Mg and Fe, and induced deficiency of CO_2 resulting from stomatal closure[12]. Under lead stress, plants possess several defense strategies to cope with lead toxicity. Such strategies include reduced uptake into the cell, sequestration of lead into vacuoles by the formation of complexes, binding of lead by phytochelatins, glutathione and amino – acids and synthesis of osmolytes. In addition, activation of various antioxidants to combat increased production of lead – induced ROS constitute a secondary defenses system [11].

Generally, lead can adversely affect ecosystems by wiping out the populations of micro – organisms at soil lead concentrations of 1000 parts per million (ppm) or more, slowing the rate of decomposition of matter[14]. Populations of plants, micro organisms and invertebrates may be affected by lead concentration of 500 to 1000ppm, allowing more lead – tolerant population of the same or different species to take their place. This will change the type of ecosystem present [14].

Although, many metals are essential, all metals are toxic at higher concentration, because they cause oxidative stress by formation of free radicals. Other heavy metals such as: lead, Mercury, Plutonium and Cadmium are toxic metals that have no known vital or beneficial effect on organisms, and their accumulation over time in the bodies of animals / plants can cause serious illness even death. Another reason why metals may be toxic is that they can replace essential metals in pigments or enzymes disrupting their functions. Thus, metals render the soil unsuitable for plant growth and destroy the biodiversity [7].

The behavior of a given element in soil (i.e., the determination of its accumulation or leaching) may be established by comparing concentrations of a trace element with a reference element [15]. The result obtained is described as an enrichment factor (EF), and the equation used to calculate it is as follows:

$$EF = \frac{C_n / C_{ref}}{B_n / B_{ref}}$$

In which C_n is concentration of the examined element in the soil, C_{ref} is concentration of the examined element in the Earth's Crust. B_n is the concentration of the reference element in the soil, and B_{ref} is the concentration of the reference element in the Earth's Crust.

A reference element is "Conservative" (i.e., the one that content in samples originates almost exclusively from the Earth's Crust. The most common reference elements in the literature are aluminum (Al), Zirconium (Zr), iron (Fe), Scandium (sc) and Titanium (Zr), Iron (Fe), Scandium (Sc) and Titanium Ti [16,17,18,19], although there are also attempts at using other elements (e.g., Manganese (Mn) [20], Chromium (Cr) (McMurty et. al., [22], and Lithium (Li)

Generally, the enrichment factor is used to assess soil contamination (enrichment), and its interpretation is as follows:

EF < 2 - depletion to minimal enrichment

EF 2 < 5 – Moderate enrichment

EF 5 < 20 – Significant enrichment

EF 20 < 40 – very high enrichment

EF > 40 – extremely high enrichment

[23]

Enrichment factor can also be used to evaluate element depletion in soil [16]. All EF values less than one May indicate that teaching and consumption of an element take procedure over its accumulation in soil.

The samples tested were collected from dumping sites in the vicinity of meaning and dumping sites in North – West, North – Central and South – East geopolitical zones of Nigeria.

The results were expected to explain which processes, accumulation, or leaching is dominant in the area. The research also attempted to analyze the relationships between enrichment and depletion of the surface layer of soil and parameters such as soil pH and humus contents.

MATERIALS AND METHODS

Location of the Research

The study areas are within Latitude 40 and 140 North and Longitude 30 and 150 East, Nigeria. These include:

1. Yargalma farming soil, near local gold ore mining site in Bukkuyum, Zamfara State, North West, Nigeria.
2. Dareta arable soil, near gold / lead ores mining site in Anka, Zamfara State, North West, Nigeria.
3. Itakpe farming soil, near iron ore mining site okene, Kogi state, North Central, Nigeria.
4. Ray Field Resort farming soil near tin ore mining site in Jos South, Plateau State, North Central, Nigeria.
5. Udi farming soil, near coal mining site in Enugu East, Enugu State, South East Nigeria.
6. Chalawa arable soil in the vicinity of tannery waste dumping site in Kumbotso, Kano state, North West, Nigeria.
7. Court Road farming soil, near general dumping site in Kumbotso, Kano State, North West, Nigeria.

The dominant formations in the areas are carboniferous deposits with layers from the Tertiary and Quaternary periods. The predominant types of soils in the study areas are arenosols and ultisols. In small areas histosols occur.

The study areas are agricultural, industrial and mining communities. The farmland covers over 65% of the study areas. The farming activity in the study areas deals meaning with crop growing such as yam, beans, cassava, maize, pepper, Okrea, leafy, vegetables, Cocoyam, rice, millet, guinea corn, tomatoes, carrot, lettuce and onions. The areas are dominated by extensive agriculture, industrial and mining activities.

Sample Collection and Analytical Procedure

The surface soil layer to a depth of 0 – 20cm (ploughing layer) was sampled with a sharp edge plastic spatula and directly transferred the soil sample into labeled polyethylene homogenization container, and mixed thoroughly to obtain a homogenous sample representative of the entire sampling interval. Each sample from equi – spaced sample station was a composite of 30 sub – samples from a distance of 20 meters per a sub – sample. When compositing was completed, the labeled homogenization polyethylene bags were closed tightly and returned same to the laboratory for pre treatment and analysis [24,25].

The farming soil samples were air dried under laboratory conditions for two weeks, ground, sieved through a 2 – mm polyethylene sieve and dried to constant mass in an oven at 75°C, and kept in desiccators for further analysis.

0.25g of the oven dried soil samples were weighed into platinum crucibles. The digestions were conducted with a mixture of 3cm³ of conc. HND₃, 2.cm³ of conc. HF and 1cm³ of 40% H₂O₂ solution.

The mixture was digested on a sand bath at a temperature of 200 – 2.30°C and the acids were evaporated to dryness. After the acids had been digested and evaporated, 30cm³ of 0.25MHNO₃ was added, warmed for 10 minutes and transferred and filtered into 50cm³ plastic containers and filled to volume with the 0.25MHNO₂ solution. Aluminum was determined gravimetrically as the 8-hydroxyquinolate with precipitation from homogenous solution using oxine reagent and urea. Aluminum concentration in the samples was evaluated stoichiometrically from Al (C₉H₆ON)₃.

The digested soil samples, the reagent blank and standard solutions were analyzed using Atomic absorption, spectrometer, model BUK Scientific UPG 210.

The lead content was calculated by using the straight line equation from the calibration curve plotted.

Soil pH was measured potentiometrically in 1MKCL with a soil / extractant ratio of 1:5 in three replicates per sample. The organic carbon was determined by Tiurin method. It was oxidized to Carbon dioxide with potassium dichromate in the presence of conc. Sulphuric acid. The unreacted potassium dichromate was titrated with ammonium iron (ii) sulphate. Considering that the average content of carbon in soil organic matter was equal to 58%, the conversion factor 1.724 was used to calculate the percentage of organic matter from the content of organic carbon.

When the enrichment factor was calculated, Aluminum was used as a reference element. Aluminum is one of the main components of the earths crust and its concentration in soil is connected mainly with the matrix. When the enrichment factor was calculated C_{ref} and B_{ref} denoted Pb and Al concentrations in the earth's crust of 10mg/kg and 82000mg/kg, respectively [26].

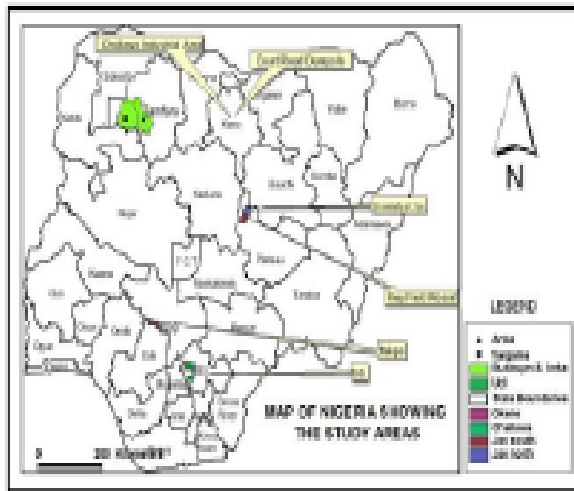


Fig. 1: Map of Nigeria Showing the Study Areas

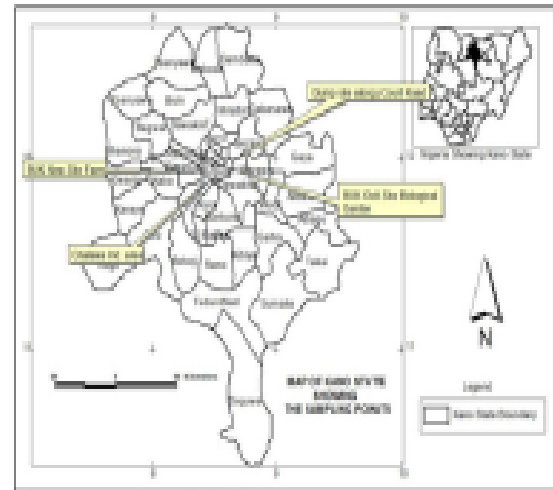


Fig. 4: Map of Kano State Showing the Sampling Points

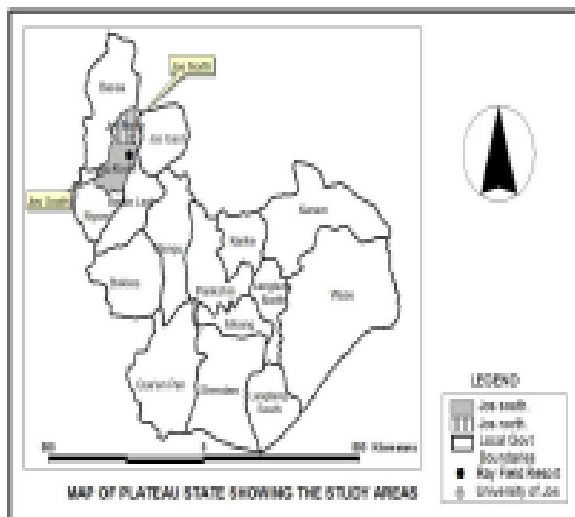


Fig. 2: Map of Plateau State Showing the Study Areas

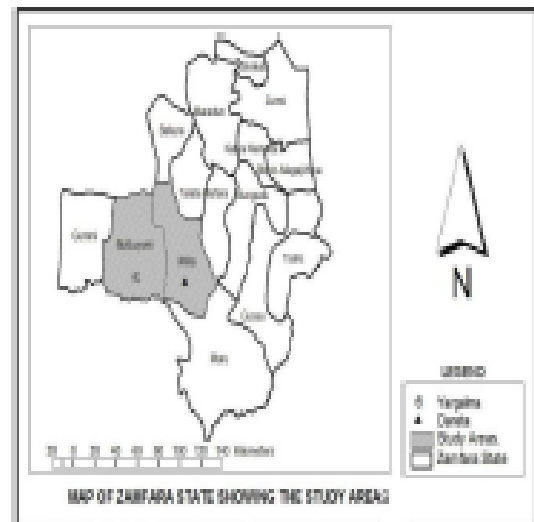


Fig. 5: Map of Zamfara State Showing the Study Areas

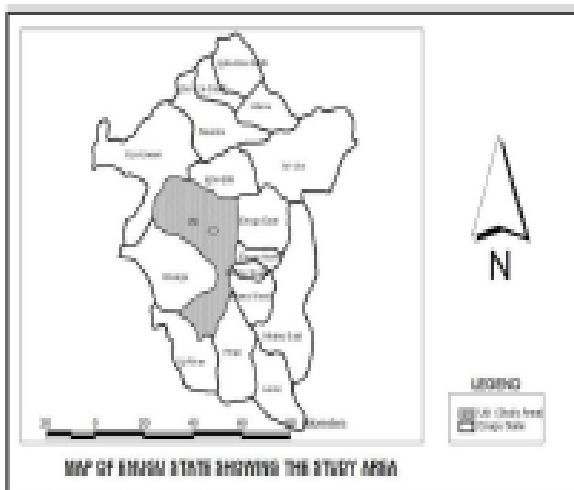


Fig.3: Map of Enugu State Showing the Study

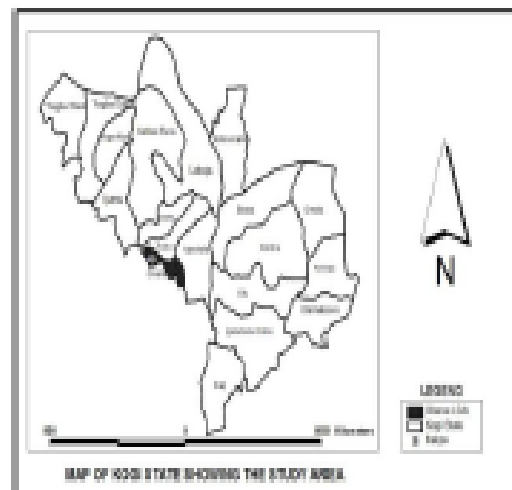


Fig. 6: Map of Kogi State Showing the Study Area

RESULTS

The studied areas include figures 1- 6. The pH of the soils (figure 7) tested ranged from 4.1 – 8.1, indicating acidic, neutral and slightly alkaline. Humus content (figure 8) ranged from 0.6% - 4.6%. Lead (Pb) distribution skewed towards high frequency of low concentrations (figure 9). It had a wide range of 6.8 – 47.8 mg/kg, the highest number of value being found in 47 – 5 / mg/kg range. Lead concentrations increased considerably with increasing humus content and vice versa. An increase in pH also affected significantly lead increase. The enrichment factors for the soil samples ranged over 8.3 – 83.9, indicating significant to extremely high enrichment. The mean enrichment factor of 30.8 classified the soil as very highly contaminated (figure 10). There was no lead depletion in all the soil samples assessed.

DISCUSSION

The enrichment factors obtained pointed to significant to extremely high enrichment. The mean enrichment factor of 30.8 classified the soil as very highly contaminated with lead. This poses serious debilitating consequences on the agro – ecosystems, since lead has no known essential functions in plants. The accumulations of lead in these study areas are essentially due to anthropogenic influence. Most of the farmers make extensive use of fertilizers, cow dung’s and tannery sludge as soil amendment materials. Accumulation of lead in soils takes place in the surface layers using organic matter [15], which is composed of simple organic compounds and humus (i.e., large – molecular, dark – colored organic bonds). Humus, like simple organic compounds, readily accumulates metals, including lead. The soils analyzed showed a distinct increase in lead concentrations with increasing humus.

An increase in soil pH, on the other hand, results in an increase in enrichment factor. Thus, the increase in pH affects greatly lead binding in soil and hinders its leaching. Humus content had a smaller effect on soil enrichment and depletion than pH.

Nigeria is one of the countries in West Africa most exposed to desert dust because of its proximity to the main emission source area and its location with regard to the dominant winds[27]. Studies have shown that harmattan dust which deposits on vegetation and farmland contains varying degrees of metal concentrations including lead[28]. Wastes such as lead acid battery containers, soldier, alloys, cable sheathing, pigments, rust inhibitors, glazes and plastic stabilizers are known to contain high concentrations of lead[29].According to the Nigerian Federal Ministry of Environment (FME), there were 14 tanning industries around Challawa, one of the studied areas in Kano State by the year 2001, that discharge their liquid and solid wastes into the immediate environment (consisting of land and water bodies). [30], stated that various chemicals are used during the soaking, tanning and post tanning processing of hides and skins. The main chemicals used include sodium sulphate and basic chromium sulphate including non – ionic wetting agents, bactericides, soda ash, Cao, ammonium sulphide, ammonium chloride and enzymes. Others are sodium bisulphate, sodium chlorite, NaCl, H₂SO₄, formic acid, sodium formate, sodium bicarbonate, vegetable tanning, synthans, resins, polyurethane, dyes, fat emulsions, pigments, binders, waxes, lacquers and form aldehyde. Various types of processes and finishing solvents and auxiliaries are used as well. It has been reported that only about 20% of the large number of chemicals used in the tanning process is absorbed by leather, the rest is released as waste [31]. Tanneries have been found to discharge not only Cr which is an inherent product of the tanning process but also significant amounts of Pb, Zn, Mn and Cu, have been observed at the main waste disposal points exceeding the toxic range in soils[30]. These anthropogenic activities contribute significantly to the elevated level of lead in the studied areas.

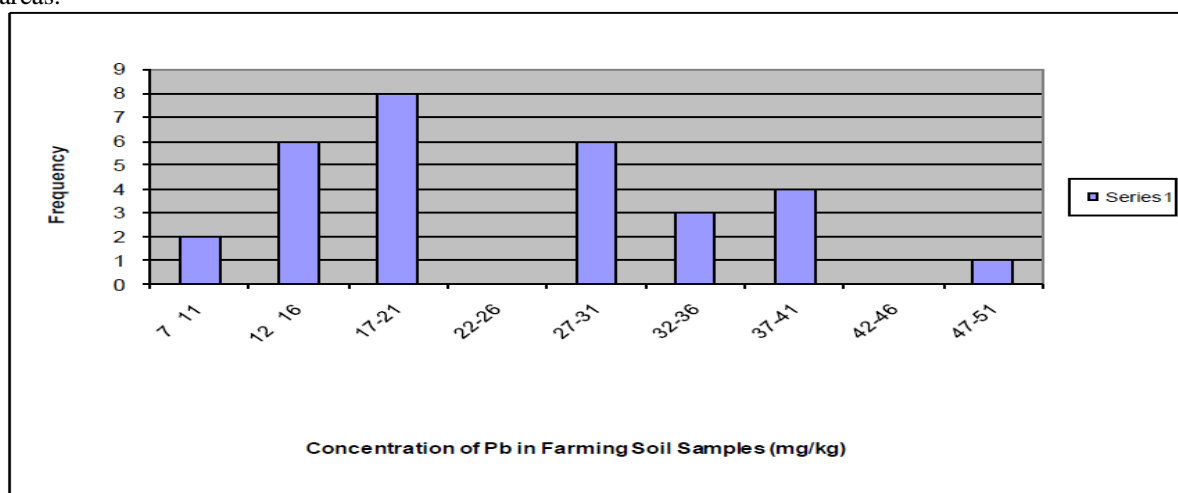


Fig. 9 : Frequency Distribution Pattern for Concentration of Pb in Farming Soil Samples

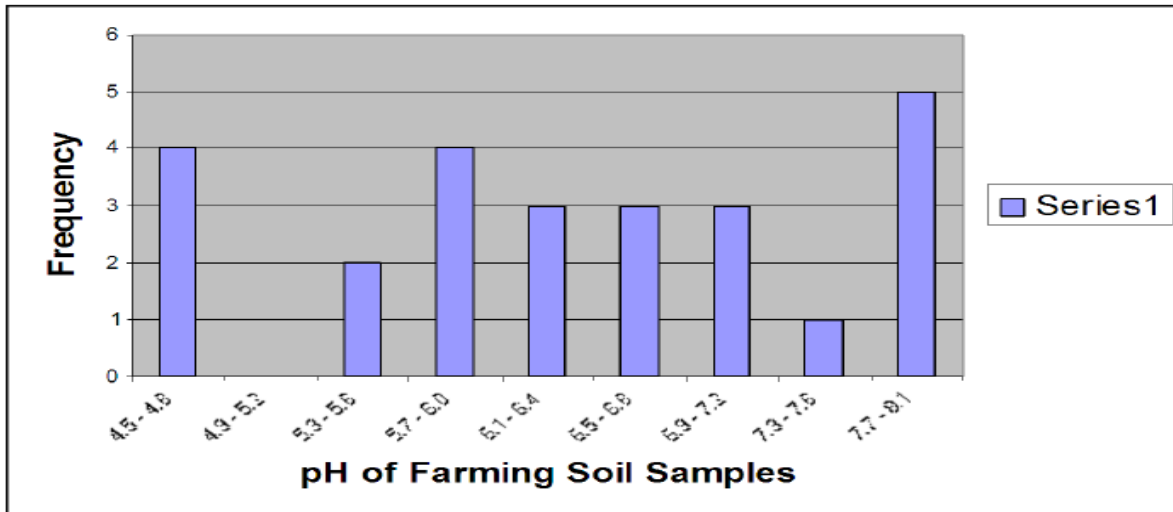


Fig 7: Distribution Pattern for pH in Farming Soil Samples

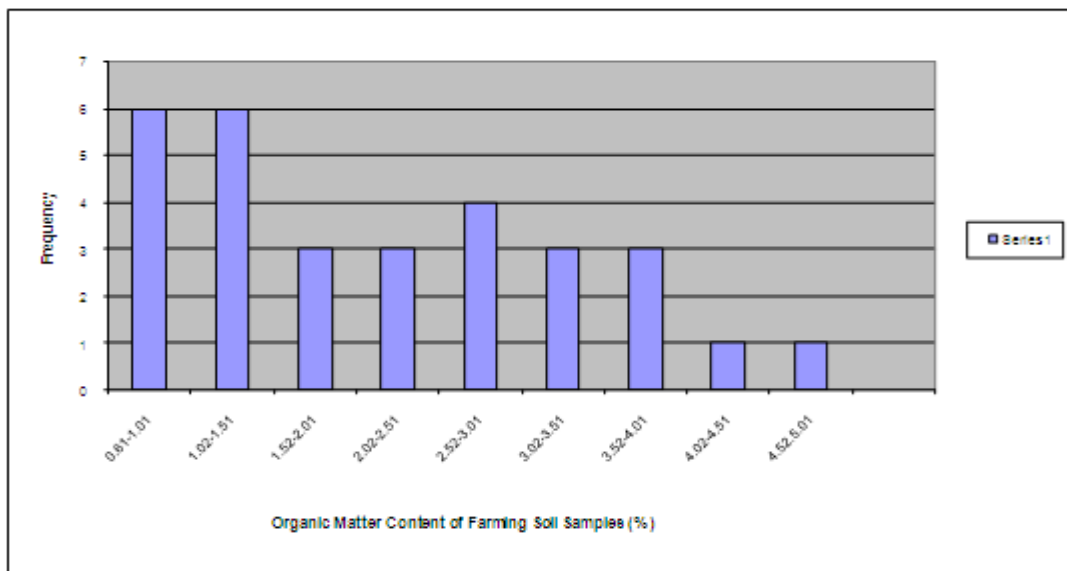
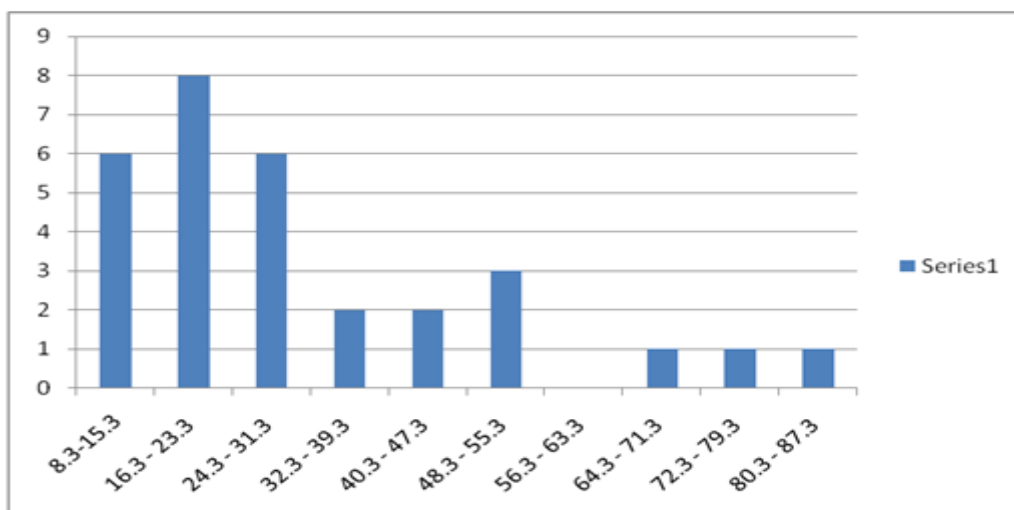


Fig. 8: Frequency Distribution Pattern for Organic Matter Content of Farming Soil Samples



Enrichment Factor (EF) of Pb in farming Soil Samples
 Figure 10: Frequency Distribution Pattern for Enrichment Factor of Pb in Farming Soil Samples Using Al as Reference Element

CONCLUSION

The locations of the studied areas in the anthropogenically affected zones are characterized by lead enrichment of all the tested soils. The dynamics of humus content, pH, prevailing environmental conditions and anthropogenic impacts account for lead accumulation in the studied areas. This poses serious debilitating effects on the agro – ecosystems, since lead has no known essential functions in plants metabolism.

REFERENCES

- [1] Reuters,T. *Lead Poisoning from Mining Kills 163 in Nigeria*. <http://ukreuters.com/article.com/article/id UKTPRE 6535920100604>. retrieved 4th June,2010 (2010).
- [2] AAP (American Academy of Pediatrics). (*Committee on Environmental Hazards and Committee on Accident and Poison Prevention of the American Academy of Pediatrics*). *Statement on Childhood Lead Poisoning. Pediatrics*, 79, 457 – 65 (1987).
- [3] Ritz, E., J and Wiecek, A. *Does Lead Play a Role in the Development of Renal Insufficiency? Contributions to Nephrology*. 64, 43 – 48 (1988).
- [4] Rice, D.C., and Karpinski, K.F. *Lifetime Low Level Lead Exposure Produces Deficits in Delayed Alternation in Adult Monkeys. Neurotoxicology And Teratology*. 10:207 – 214 (1988).
- [5] UNEP (United Nation Environmental Protection). *Lead Poisoning, Northern Nigeria, Outbreak, UNEP, Zamfara* (2011).
- [6] ATSDR (Agency for Toxic Substances and Diseases Registry). *Toxicological Profile for Lead, ATSDR / TP – 88/17*. (1992)
- [7] Ghosh, M. and Singh, S. P. *A Review Phytoremediation of Heavy Metals and Utilization of its by Products. Applied Ecol. Environ. Rex* 73: 1- 18 (1992).
- [8] Nyle, C.B and Ray, R.W: *The Nature and Properties of Soil. Prentice Hall, Inc. USA. pp 4 – 70* (1999).
- [9] WHO. *Guidelines of Drinking Water Quality, Health Criteria and Other supporting Information (2nd Ed. Vol. 2) AITBS Publishers, New Delhi, pp 119 – 382* (1999).
- [10] Duggan, M.J. *Lead in Urban Dust: An Assessment. Water, Air, Soil Pollution*. 14:309-21 (1980).
- [11] Holmgren, G.G. Meyer, M.W., Chaney, R.L, and Daniels R.B. (1993). *Cadmium, lead, Copper and Nickel in Agricultural Soils of the United States of America. Journal of Environmental Quality* 22:335 – 348.
- [12] Rolfe, G.L., Haney, A and Reinbold K.A. *Environmental Contamination by lead and other Heavy Metals. Vol. 2. Ecosystem Analysis. Institute for Environmental Studies. University of Illinois, Urban – Champaign Pp112* (1977).
- [13] EPA (Environmental Protection Agency) *Uptake / Biokinetic Model for Lead, Version 0.50 (December, 1990)*, (1990).
- [14] UNEP: *Impact of Lead Toxicity in Social Ecosystem. UNEP, 1991* (1991).
- [15] Kabata – Pendias, A., Pendias, H. *Biochemistry of Trace Elements, Panstwowe Wydawnictwo Naukowe (in Polish): Warsaw, Poland* (1999).
- [16] Blaser, P. Zimmermann, S, Luster J., Shoty K, W. *Critical Examination of Trace Element Enrichment and Depletions in Soils; As, Cr, Cu, Ni, Pb and Zn in Swiss Forest Soil . Science of the Total Environment*, 249: 257 – 280 (2000).
- [17] Reiman, C. and Decarital, P *Intrinsic Flaws of Element Enrichment Factors (Efs) in Environmental Geochemistry. Environmental Science and Technology*, 34:5084 – 5091 (2000).
- [18] Schiff, K.C, Weishberg, S.B.: *Iron as a Reference Element for Determining Trace metal Enrichment in Southern California Coastal Shelf Sediments. Marine Environmental Research*, 48:161 – 176 (1999).
- [19] Schropp, S.J; Lewis F.G., Window, H.L., Ryan, J.A., Clader, F.D., Burney, L.C. *Interpretation of metal concentrations in Estuarine Sediments of Florida using Aluminium as a Reference Element. Estuaries*, 13:227 – 235 (1990).
- [20] Loska, K., Cabula J. Pelzer, J. Wiechula, D., Kwapulinski, J. *Use of Enrichment and contamination factor together with Geoaccumulation Indexes to Evaluate the Content of Cd, Cu and Ni in the Rubnik Water Reservoir in Poland. Water, Air and Soil Pollution*, 93: 347 – 365. (1997).
- [21] McMurtry G.M., Wiltshire, JC; Kauahikaya, J.P. *Heavy Metal Anomalies in Coastal Sediments of Oahu, Hawaii, Pacific Science*. 49: 452 – 470 (1995).
- [22] Loring D.H. : *Lithium: A new Approach for the Gramlometric Normalization of Trace Metal Data. Marine Chemistry*, 2.9: 155 – 168 (1990).
- [23] Sutherland R.A. *Bed Sediment – Associated Trace Metals in an Urban Stream. Oahu, Hawaii, Environmental Geology* 39:611 – 627 (2000).
- [24] Mason, B.J. *Preparation of Soil Sampling Protocol: Technique and Strategies.EPA – 60014.83 – 20* (1983).
- [25] Barth, D.S., Mason, B.J. *Soil Sampling Quality / Assurance. Users Guide EPA – 60014: 84 – 043* (1984).

- [26] Taylor S.R., McLennanb, S.M.: *The Geochemical Evolution of the continental Crust. Reviews in Geophysics*, 33: 241 – 265 (1995).
- [27] Rutherford S. Clerk, E, McTanish, G., Simpson, R. Mitchel, C.: *Characteristics of Rural Dust Event Shown to Impact on Asthma Severity in Birshan, Australia. Int. J. Biometeorol* 42:217 – 25 (1999).
- [28] Sunnu, A, Afeth, G. Resh, F.A.: A long Term Experimental Study of the Saharan Dust Presence in West Africa. *Atmos Res.* 87:13 – 26 (2008).
- [29] WHO. Lead – Environmental Aspects Geneva. Environmental Health Criteria, NO. 85 (1989).
- [30] Imamul Huq, S.M. Critical Environmental Issues Relating to Tanning Industries in Bangladesh in: Naidu et al., (eds). *Towards Better Manager of Soils Contaminated with Tannery Waste. Proceedings of a Workshop held at the Tamil Naidu Agricultural University, Coimbatore, India 31st January to 4th February, (1998).*
- [31] UNIDO (United Nations Industrial Development Organization): *Cost of Tanned Waste Treatment 15th Session of the Leather and Leather Products Industry Panel, Leon, Mexico (2005).*